

The Greenmont



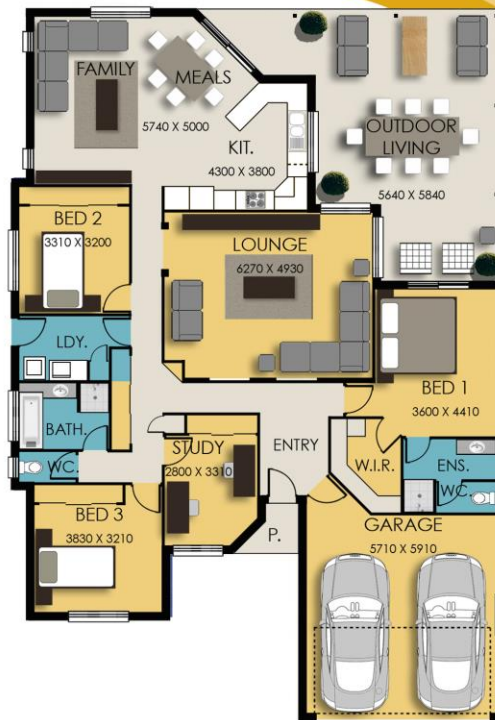
| | |
|----------------|----------------------------|
| Living Areas | 226.9 m ² |
| Porch | 2.0 m ² |
| Outdoor Living | 47.2 m ² |
| Total | 276.1 m² |

3
 2
 2



RAY WESTON
CONSTRUCTIONS

Shop 9, The Homemaker Centre,
12 Prescott Street,
Toowoomba, Qld 4350
t (07) 4638 1524
f (07) 4638 1701
e admin@raywestonconstructions.com.au



Dimensions: 14740 mm x 21210 mm

© 2015 Ray Weston Constructions

*This artist's impression and floor plan illustration represented in this brochure is for advertising purposes only. This brochure does not form part of any written contract. Rycal Pty Ltd trading as Ray Weston Constructions 2015.

QBCC Lic. No. 712 425
ACN 086 177 335